

Phone 01654 767626
 Mobile 07879 433148

Aberdyfi Harbour

Mehefin/June 2017
 VHF CH12 & CH16

Please contact the harbour office at the outer buoy for any updates to this chart.
 Although passable both sides, it is recommended to pass the YSM on your starboard side on approach and Port on departure.

Harbour Masters Office

Visitors Moorings

YSM
 Fl.Y.2s

No 7
 Fl.G.2s

No 5
 Fl.G.4s

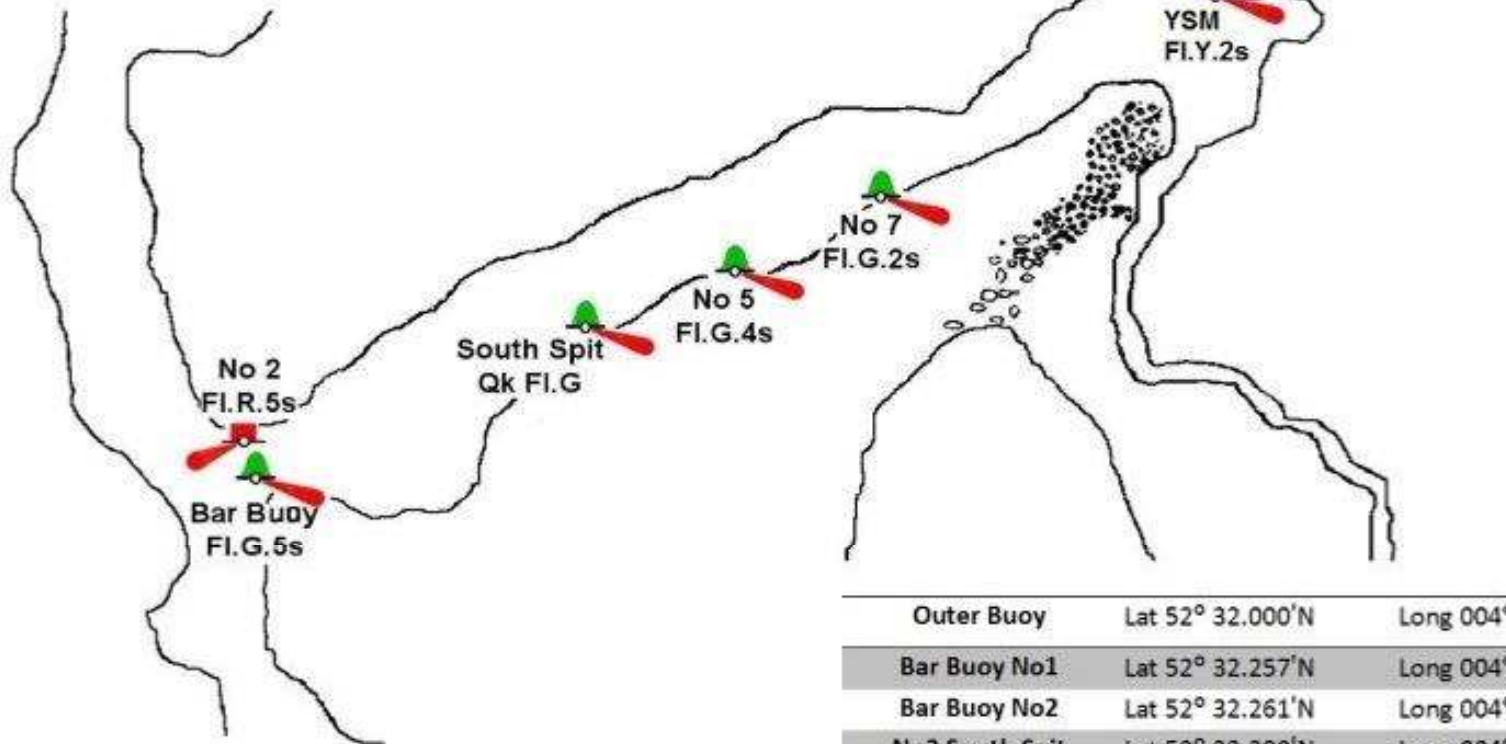
South Spit
 Qk Fl.G

No 2
 Fl.R.5s

Bar Buoy
 Fl.G.5s

N ↑


 Aberdyfi Outer
 Iso W.4s



Outer Buoy	Lat 52° 32.000'N	Long 004° 05.550'W
Bar Buoy No1	Lat 52° 32.257'N	Long 004° 04.914'W
Bar Buoy No2	Lat 52° 32.261'N	Long 004° 04.989'W
No3 South Spit	Lat 52° 32.290'N	Long 004° 04.637'W
No5	Lat 52° 32.198'N	Long 004° 04.053'W
No7	Lat 52° 32.256'N	Long 004° 03.408'W
YSM 4 Knots	Lat 52° 32.469'N	Long 004° 02.861'W

williamstockford@gwynedd.llyw.cymru